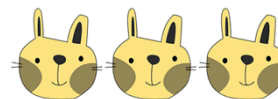

SILVIA HAT

KNITTING PATTERN



Skill level: advanced

One Sizes: woman

With head circumference 22" (56 cm)

MATERIALS

Worsted (9 wpi; 10 ply; no 4: Medium) weight yarn such as Lana Gatto Misina 60g or 120 yards

Lace (2 ply; no 0: Lace) weight yarn such as Midara Silk Mohair 25g or 241 yards

Knitting needles US 8 (5 mm) or to obtain gauge **4" x 4" (10 x 10 cm) = 16 sts x 24 rows** (in stockinette stitch and worsted yarn)

Knitting needles US 4 (3.5 mm) or to obtain gauge **4" x 4" (10 x 10 cm) = 26 sts x 34 rows** (in stockinette stitch and lace yarn)

Ribbon and beads for decorating, tapestry needle

PATTERN NOTES

Before you start, check the gauge, adjust needles if needed

The hat is knitted flat in two layers, worsted weight yarn for inner and lace for outer layer

Note! You can use an extra needle for making the bobbles by putting the extra needle on top of your right-hand needle when knitting the 7 sts out of one. This way the sts will be loose enough.

If you need any help with the patterns, please contact me
on marie@mukicrafts.com

*** Note: you can sell finished items made from this pattern but please do not resell the patterns as I have put a lot of effort into designing and testing them. Thank you! ***

Copyright 2014© Maarja Marie Vaikla www.mukicrafts.com



ABBREVIATIONS

St(s) – stitches

RS and WS – right and wrong side

K – knit

P – purl

K2tog – knit two stitches together

Yo – yarn over

M1 – make one knit stitch

K 5 sts out of 5 – knit 5 stitches together but before slipping them from left needle work: yo, k1, yo, k1

Make a bobble - knit 7 sts out of one [knit, yarn over, knit, yarn over...] On WS purl these 7 sts together

Ssk – slip slip knit

THE HAT

Start here.

With smaller needles cast on with both yarns held together 72 sts, work garter stitch for 6 rows

Row 7 (RS): *k2tog, yo, k1* across

Rows 8-10: knit all sts

Now put the lighter lace yarn to side (don't cut), change to larger needles, you will continue knitting with worsted weight yarn and making the inner layer first, later you work the top layer with thinner yarn.

Row 11: k2, M1, k2

You will have 90 sts.

Work in stocking stitch until the piece measures about 6" (that 15 cm) from the cast on row, end with a WS row,

Decrease Row (RS): *k3, k2tog* until end (70 sts left)

Knit another 2" (5 cm) in stockinette stitch and with RS facing start decreasing:

Crown Row 1 (RS): *k2tog, k2* until the end

Crown Row 2 (WS): p all sts

Crown Row 3: *k2tog, k1* until the end

Crown Row 4: p all sts

Crown Row 5: *k2tog* until the end

Crown Row 6: p all sts

Cut the yarn, pull it through the remaining sts, tighten together and fasten.

Continue with the top layer.

Switch to US 4 (3.5 mm) needles and pick up and knit with lighter yarn from Row 10 (where you finished with working two strands of yarn and the thinner yarn thread is) 72 sts.

Top Layer Row 2 (WS): purl all

Top Layer Row 3 (WS): k1, (M1, k2) repeat all across to the last st: k1 (107 sts)

Top Layer Row 4: purl all

Continue with the Lace pattern (see Chart 1).

Lace Row 1 (RS): k1 (edge), * ssk, k4, yo, k1, yo, k1, k2tog, k1, ssk, k1, yo, k1, yo, k4, k2tog*, repeat from *-* until the last stitch: k1 (edge)

Lace Row 2 (WS) and every alternate row: purl all sts (remember to purl the bobble sts together!)

Lace Row 3: k1 (edge), * ssk, k3, yo, k1, yo, "make a bobble", k1, k2tog, k1, ssk, k1, make a bobble, yo, k1, yo, k3, k2tog*, repeat from *-* until the last stitch: k1 (edge)

Lace Row 5: k1 (edge), * ssk, k2, yo, k1, yo, "make a bobble", k2, k2tog, k1, ssk, k2, make a bobble, yo, k1, yo, k2, k2tog*, repeat from *-* until the last stitch: k1 (edge)

Lace Row 7: k1 (edge), * ssk, k1, yo, k1, yo, "make a bobble", k3, k2tog, k1, ssk, k3, make a bobble, yo, k1, yo, k1, k2tog*, repeat from *-* until the last stitch: k1 (edge)

Lace Row 9: k1 (edge), * ssk, yo, k1, yo, "make a bobble", k4, k2tog, k1, ssk, k4, make a bobble, yo, k1, yo, k2tog*, repeat from *-* until the last stitch: k1 (edge)

Lace Row 11: k1 (edge),* k2, “make a bobble”, k5, k2tog, yo, k1, yo, ssk, k5, “make a bobble”, k2*, repeat from *-* until the last stitch: k1 (edge)

Lace Row 13: k1 (edge),* k7, k2tog, yo, k3, yo, ssk, k7 *, repeat from *-* until the last stitch: k1 (edge)

Lace Row 15: k1 (edge),* k2, “k 5 stitches out of 5” k2, yo, sl1, k2tog, passo, yo, k2, “k 5 stitches out of 5”, k2*, repeat from *-* until the last stitch: k1 (edge)

Lace Row 17 and 19: k all stitches

Repeat Lace Rows 1-20, three times.

Crown Row 1 (RS): *k2tog, k1* until 1 st left: k1

Crown Row 2: p all sts

Crown Row 3: *k2tog, k1* until the end

Crown Row 4: p all sts

Crown Row 5: *k2tog* all sts

Cut the yarn, pull it through the remaining sts, tighten together and fasten.

ASSEMBLY

Now first sew together the inner layer (preferably with mattress stitch) and the garter stitch part of the hat, then the top layer.

Decorate the hat with a ribbon pulling it through the loops of the band (Row 7), tie it into a bow.

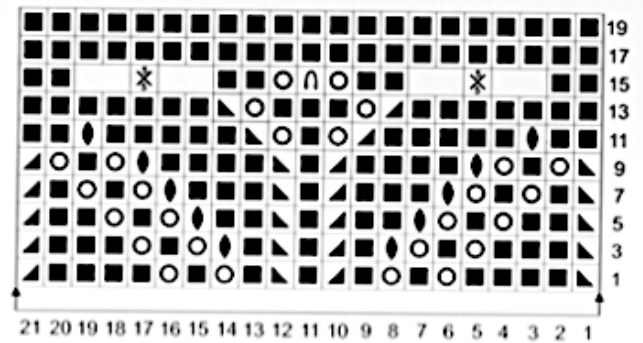


Chart 1

Note! The edge stitches are not included in the chart

